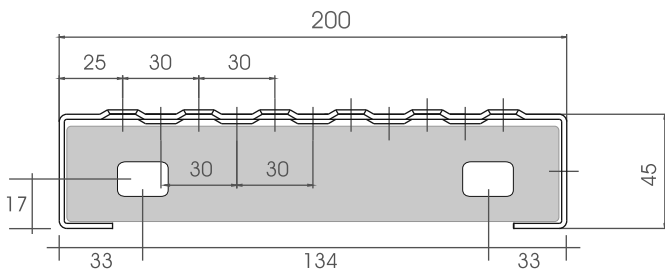
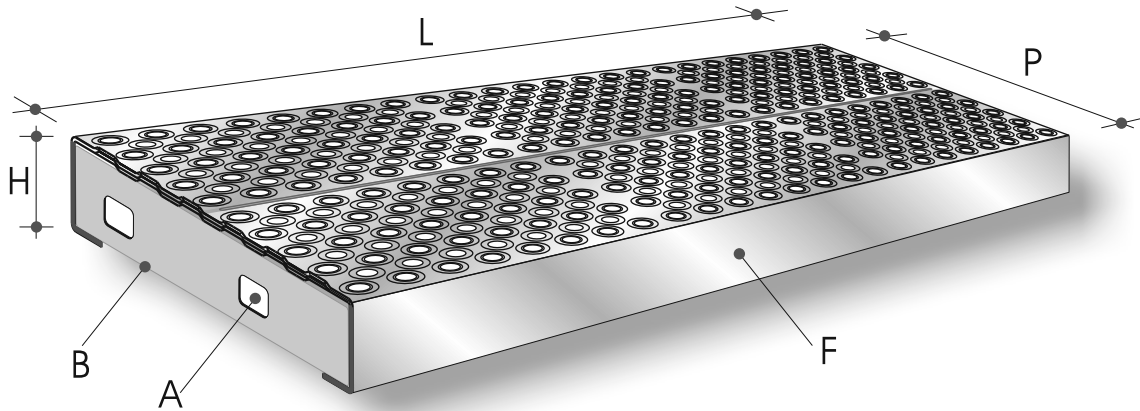
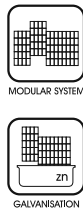
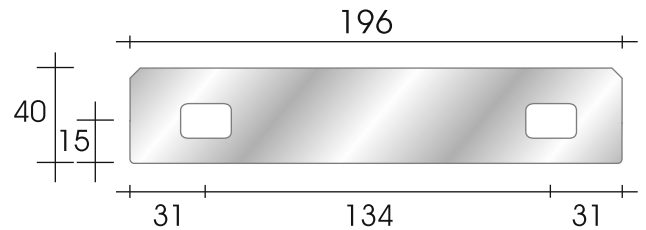


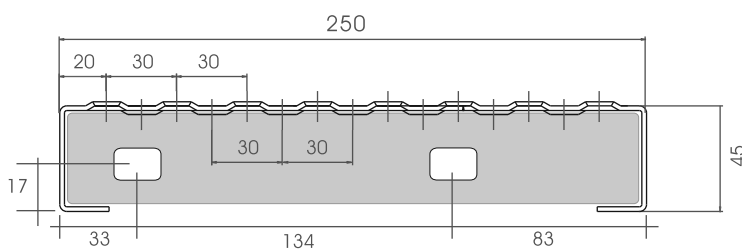
# GRADINO DRILL 20/25



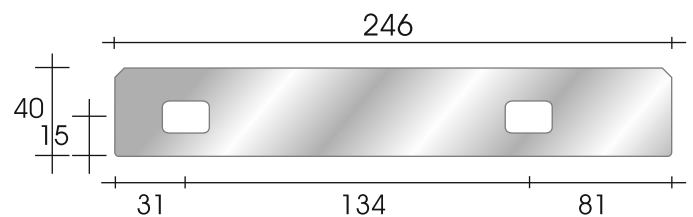
## DRILL 20



LARGHEZZA mm. L	PEDATA mm. P	FRONTALINO F	ALTEZZA PIEGHE mm. H	BORDATURA LAT. mm. B	PESO Kg/cd.	
					GR	ZN
800	200	LAMIERA	45	40 x 5	4,31	4,67
1000	200	LAMIERA	45	40 x 5	5,20	5,64
SPESSORE LAMIERA			ASOLA A	FORO PEDATA		
20/10			20 x 14	ø 10		



## DRILL 25



LARGHEZZA mm. L	PEDATA mm. P	FRONTALINO F	ALTEZZA PIEGHE mm. H	BORDATURA LAT. mm. B	PESO Kg/cd.	
					GR	ZN
800	250	LAMIERA	45	40 x 5	5,04	5,47
1000	250	LAMIERA	45	40 x 5	6,04	6,56
SPESSORE LAMIERA			ASOLA A	FORO PEDATA		
20/10			20 x 14	ø 10		



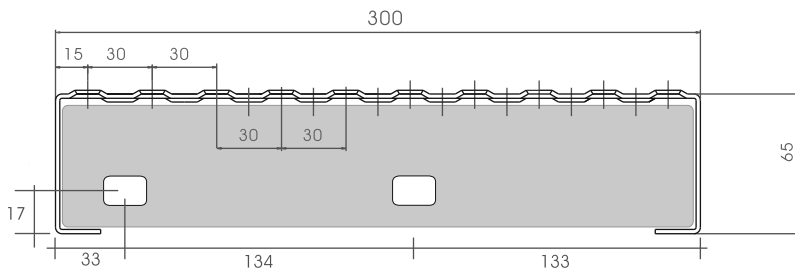
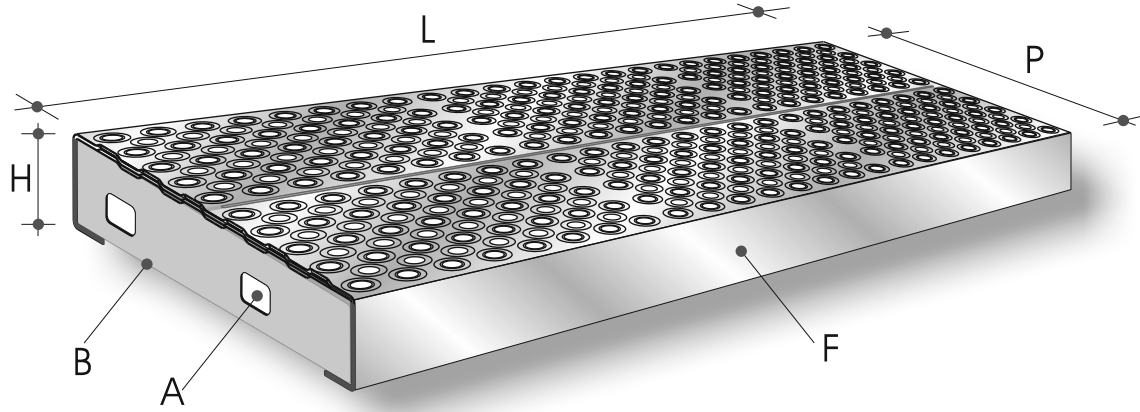
# GRADINO DRILL 30



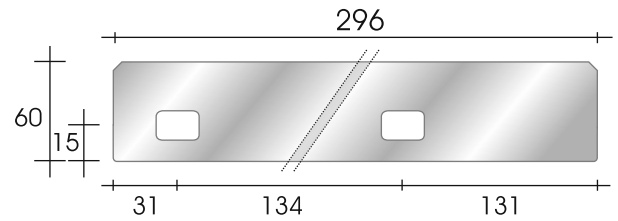
MODULAR SYSTEM



GALVANISATION



## DRILL 30



LARGHEZZA mm. L	PEDATA mm. P	FRONTALINO F	ALTEZZA PIEGHE mm. H	BORDATURA LAT. mm. B	PESO Kg/cd.	
					GR	ZN
800	300	LAMIERA	65	60 x 5	6,40	6,94
1000	300	LAMIERA	65	60 x 5	7,71	8,37
1200	300	LAMIERA	65	60 x 5	9,02	9,79

SPESSORE LAMIERA  
20/10

ASOLA A  
20 x 14

FORO PEDATA  
ø 10



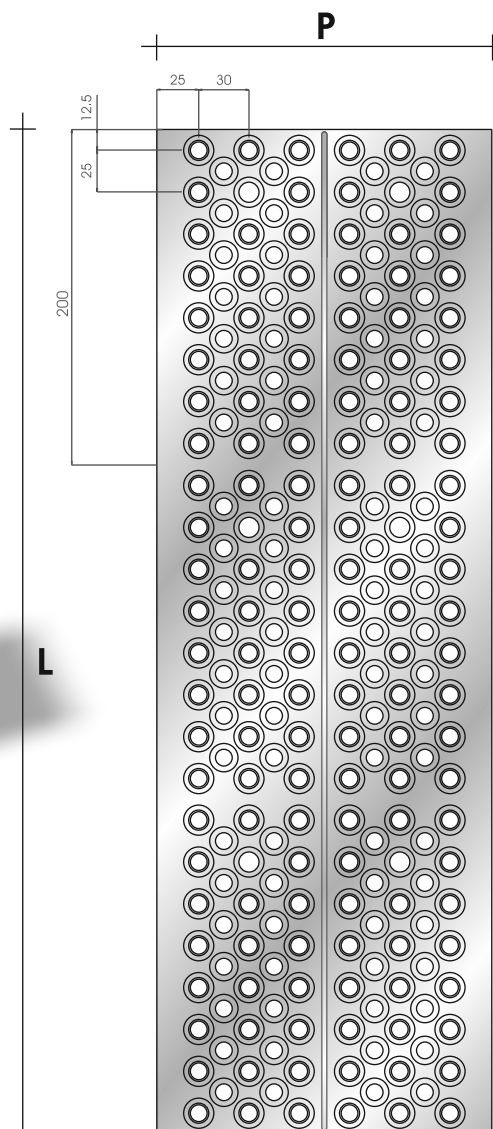
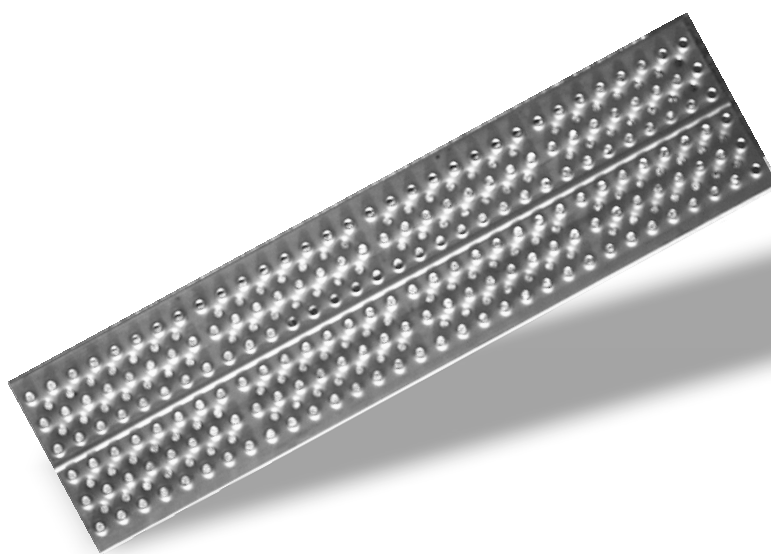
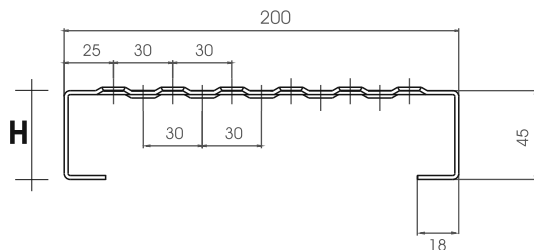
# TAVOLA DRILL 20



MODULAR SYSTEM



GALVANISATION



LARGHEZZA  
mm.  
P

200

LUNGHEZZA  
mm.  
L

3000

ALTEZZA PIEGHE  
mm.  
H

45

SPESORE  
LAMIERA

20/10

PESO  
Kg/ml.

GR ZN  
4,60 5,00

SPESORE LAMIERA  
20/10

ASOLA A  
20 x 14

FORO PEDATA  
ø 10

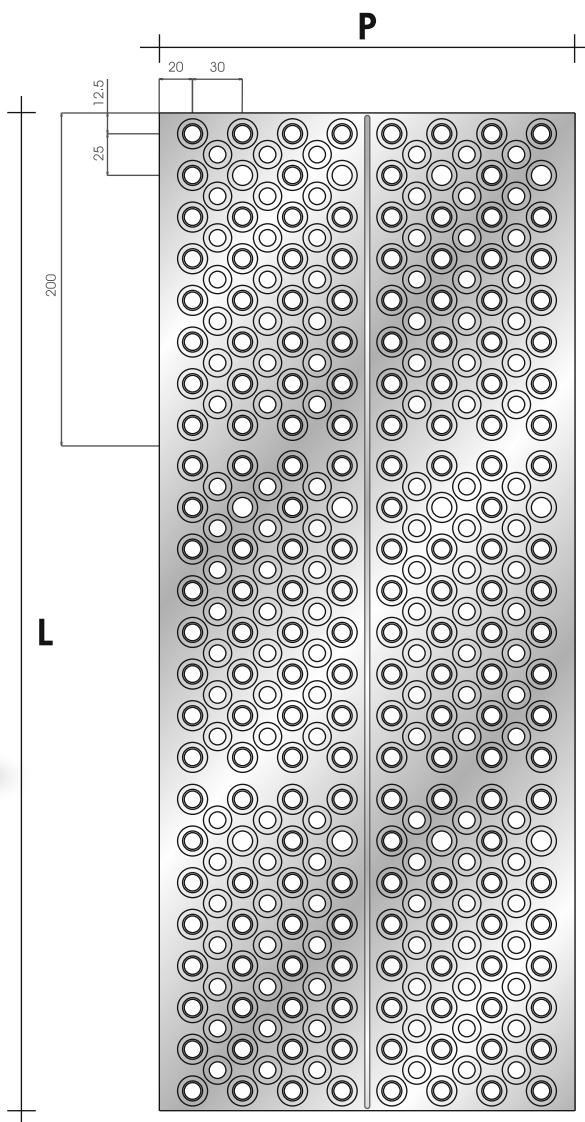
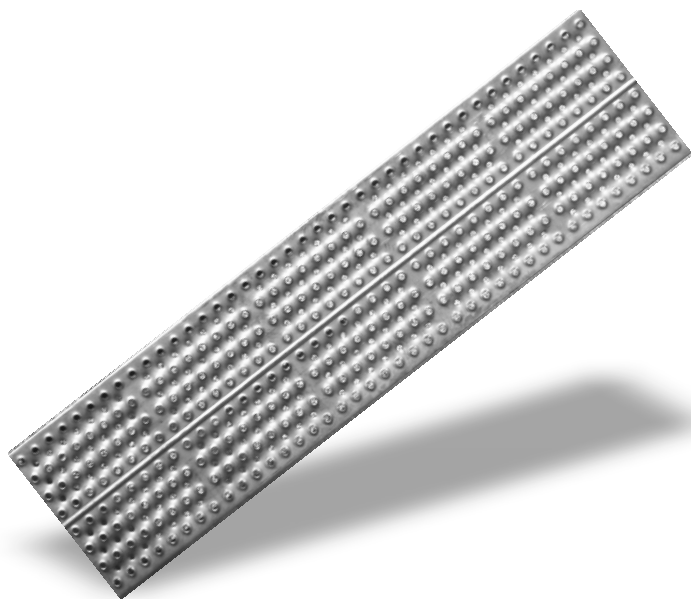
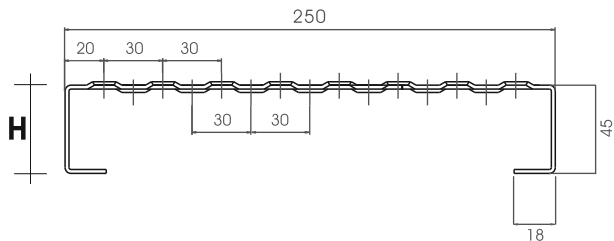
# TAVOLA DRILL 25



MODULAR SYSTEM



GALVANIZATION



LARGHEZZA

mm.

P

250

LUNGHEZZA

mm.

L

3000

ALTEZZA PIEGHE

mm.

H

45

SPESORE

LAMIERA

20/10

PESO

Kg/ml.

GR

ZN

5,25

5,70

SPESORE LAMIERA

20/10

ASOLA A

20 x 14

FORO PEDATA

ø 10



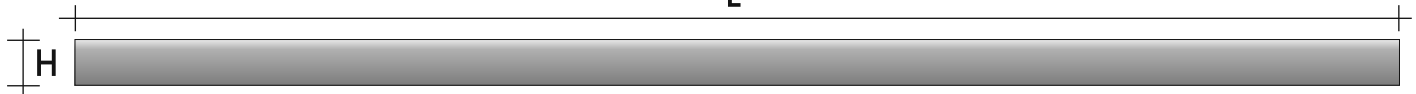
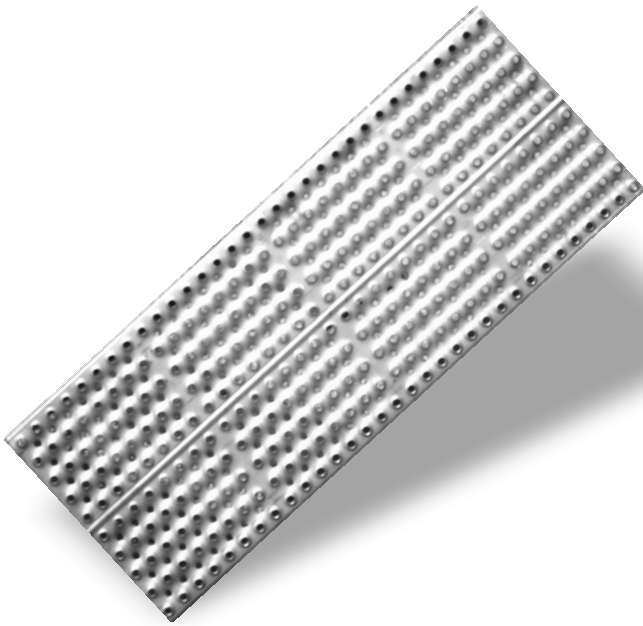
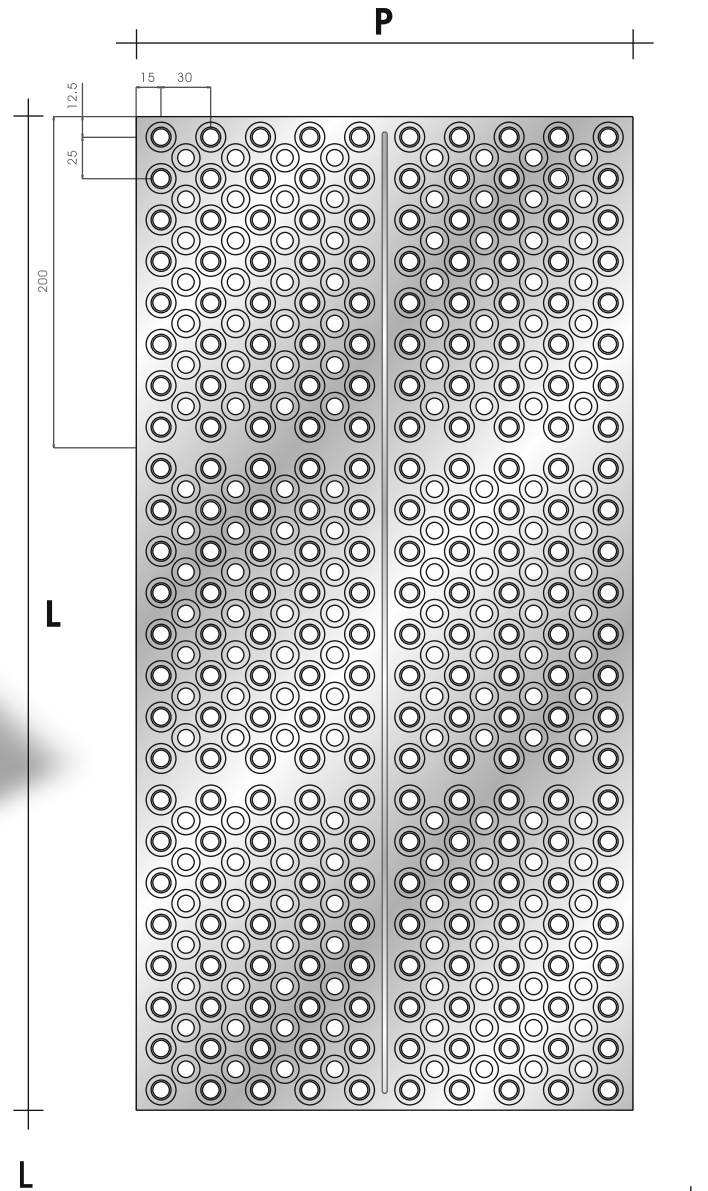
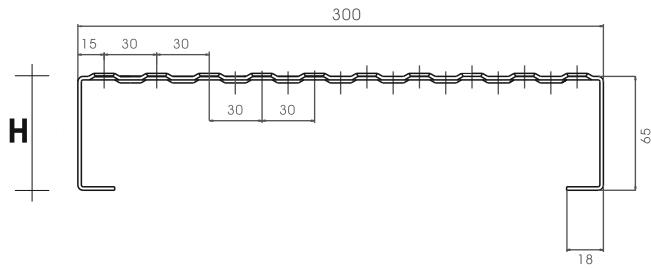
# TAVOLA DRILL 30



MODULAR SYSTEM



GALVANISATION



LARGHEZZA  
mm.  
P

300

LUNGHEZZA  
mm.  
L

3000

ALTEZZA PIEGHE  
mm.  
H

65

SPESSORE  
LAMIERA

20/10

PESO  
Kg/ml.  
GR ZN

6,41 7,00

SPESSORE LAMIERA

20/10

ASOLA A

20 x 14

FORO PEDATA

ø 10



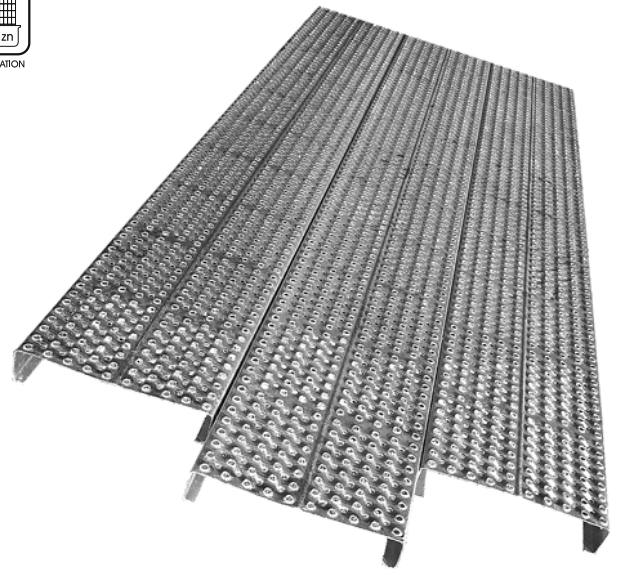
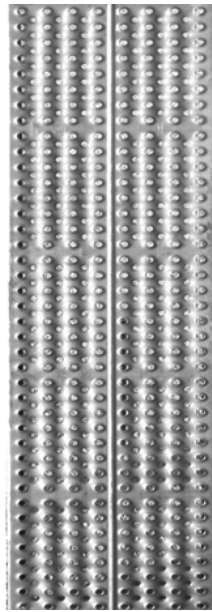
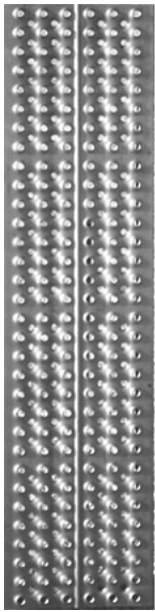
# TABELLE DI PORTATA DRILL 20/25



MODULAR SYSTEM



GALVANISATION



## DRILL 200

<b>H 45</b>
MATERIALE
<b>FE 360</b>
SPESSORE mm.
<b>2</b>
W mm. <sup>3</sup>
<b>5073</b>

Distanza tra gli appoggi ( mm. )	<b>800</b>	<b>1000</b>	<b>1200</b>	<b>1400</b>	<b>1600</b>	<b>1800</b>
Carico ammissibile ( da N/m <sup>2</sup> )	5073	3247	2255	1656	1268	1002
Freccia f ( mm. )	1,587	2,480	3,571	4,861	6,349	8,035
L / 200 ( mm. )	4,000	5,000	6,000	7,000	8,000	9,000
T max ( da N/cm <sup>2</sup> )	<b>178</b>	<b>142</b>	<b>119</b>	<b>102</b>	<b>89</b>	<b>79</b>

Distanza tra gli appoggi ( mm. )	<b>2000</b>	<b>2200</b>	<b>2400</b>	<b>2600</b>	<b>2800</b>	<b>3000</b>
Carico ammissibile ( da N/m <sup>2</sup> ) <sup>2</sup>	812	559	395	286	213	162
Freccia f ( mm. )	9,920	10,000	10,000	10,000	10,000	10,000
L / 200 ( mm. )	10,000	11,000	12,000	13,000	14,000	15,000
T max ( da N/cm <sup>2</sup> ) <sup>2</sup>	<b>71</b>	<b>54</b>	<b>42</b>	<b>33</b>	<b>26</b>	<b>21</b>

## DRILL 250

<b>H 45</b>
MATERIALE
<b>FE 360</b>
SPESSORE mm.
<b>2</b>
W mm. <sup>3</sup>
<b>5153</b>

Distanza tra gli appoggi ( mm. )	<b>800</b>	<b>1000</b>	<b>1200</b>	<b>1400</b>	<b>1600</b>	<b>1800</b>
Carico ammissibile ( da N/m <sup>2</sup> )	4122	2638	1832	1346	1031	814
Freccia f ( mm. )	1,513	2,365	3,405	4,635	6,053	7,661
L / 200 ( mm. )	4,000	5,000	6,000	7,000	8,000	9,000
T max ( da N/cm <sup>2</sup> )	<b>181</b>	<b>145</b>	<b>121</b>	<b>103</b>	<b>90</b>	<b>80</b>

Distanza tra gli appoggi ( mm. )	<b>2000</b>	<b>2200</b>	<b>2400</b>	<b>2600</b>	<b>2800</b>	<b>3000</b>
Carico ammissibile ( da N/m <sup>2</sup> ) <sup>2</sup>	660	476	336	244	182	138
Freccia f ( mm. )	9,459	10,000	10,000	10,000	10,000	10,000
L / 200 ( mm. )	10,000	11,000	12,000	13,000	14,000	15,000
T max ( da N/cm <sup>2</sup> ) <sup>2</sup>	<b>72</b>	<b>57</b>	<b>44</b>	<b>35</b>	<b>28</b>	<b>23</b>



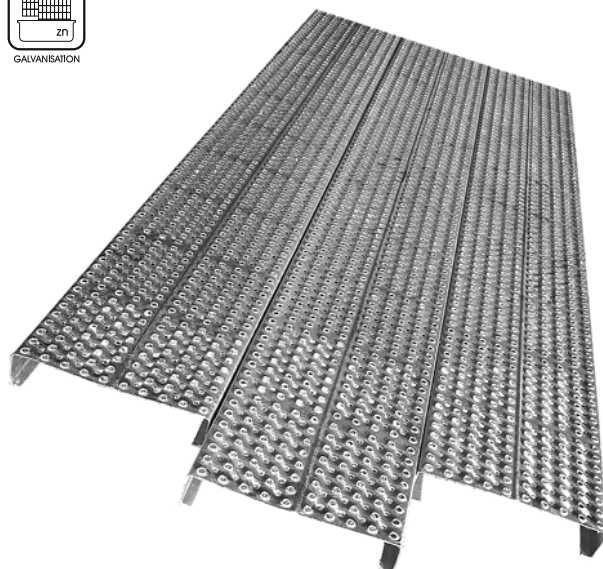
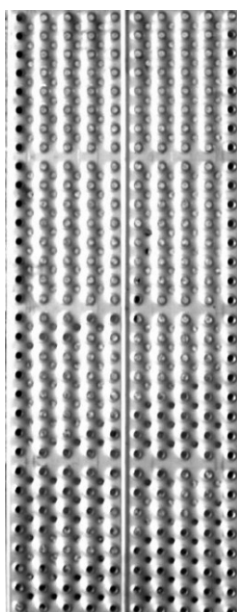
# TABELLA DI PORTATA DRILL 30



MODULAR SYSTEM



GALVANIZATION



## DRILL 300

<b>H 65</b>
MATERIALE
<b>FE 360</b>
SPESSORE mm.
<b>2</b>
W mm. <sup>3</sup>
<b>9057</b>

Distanza tra gli appoggi (mm.)	<b>800</b>	<b>1000</b>	<b>1200</b>	<b>1400</b>	<b>1600</b>	<b>1800</b>
Carico ammissibile (da N/m <sup>2</sup> )	6038	3864	2684	1972	1510	1193
Freccia f (mm.)	1,058	1,653	2,381	3,241	4,233	5,357
L / 200 (mm.)	4,000	5,000	6,000	7,000	8,000	9,000
T max (da N/cm <sup>2</sup> )	<b>318</b>	<b>254</b>	<b>212</b>	<b>182</b>	<b>159</b>	<b>141</b>

Distanza tra gli appoggi (mm.)	<b>2000</b>	<b>2200</b>	<b>2400</b>	<b>2600</b>	<b>2800</b>	<b>3000</b>
Carico ammissibile (da N/m. <sup>2</sup> )	966	798	671	511	380	289
Freccia f (mm.)	6,614	8,003	9,524	10,000	10,000	10,000
L / 200 (mm.)	10,000	11,000	12,000	13,000	14,000	15,000
T max (da N/cm. <sup>2</sup> )	<b>127</b>	<b>116</b>	<b>106</b>	<b>87</b>	<b>70</b>	<b>57</b>

